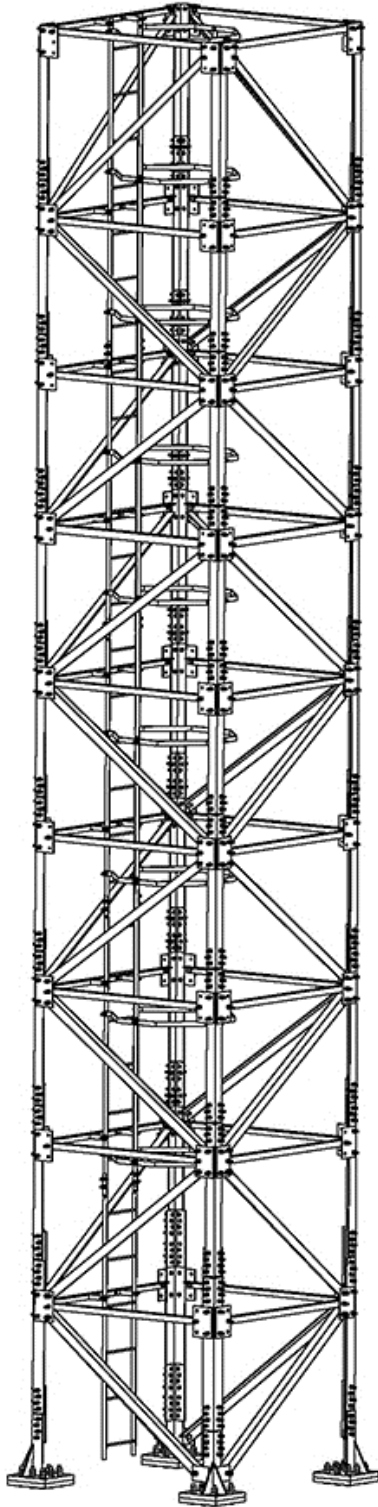


PRODUCT SPECIFICATION

PRODUCT NAME : PL4-A

CATEGORY : Lattice Towers



PL4 - A RANGE (Parallel Angular 4 Leg Tower)

A square self-supporting tower and depending on the specific site topography can be used in Urban, Suburban, and open terrain areas. The tower uses angular sections and is a parallel design. All members are bolted, and manufactured using the most efficient lengths. Ease of assembly, low drag coefficient and efficient price are the main advantages of this tower.

This tower complies with international design standards (TIA222H) and can be re-certified to other standards if required.

Features

- All elements bolted for ease of assembly and installation
- Fully hot-dip galvanized
- S355 steel
- Standard bolts sizes (Grade 8.8)
- TIA-222-H standard
- Support for leg & face mount antennas

Applications

- Cellular
- Lights
- Security

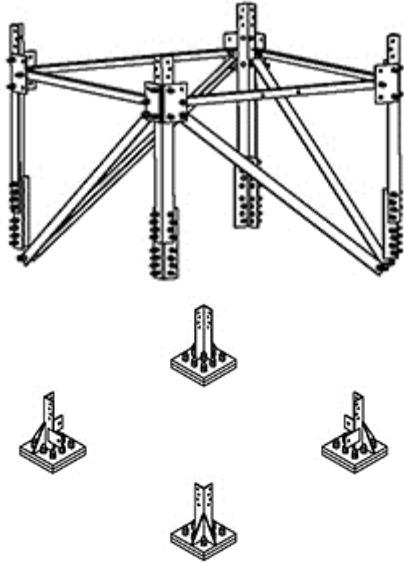


PRODUCT SPECIFICATION

PRODUCT NAME : PL4-A

CATEGORY : Lattice Towers

Stage 1



Includes

- Ladder
- Lighting spike
- 1 x Platform
- Built-in cable tray
- Grounding + Foundation
- Assembly drawings
- HD bolts

Additional Options

- Fencing & security
- Fall arrest
- Anti-climbing solutions
- Mounting kits
- Antenna bracket kits

GENERIC SPECIFICATIONS (TIA222H)		
Tower Height	10 - 35	m
Tower Type	Parallel Angular	-
Class of Structure	II	-
Max Wind Speed	40**	m/s
Designed For Period of	50	years
Joint Type	Bolted	-
Tower topography	Urban – Suburban - Open Train (TIA Exposure B & C)	-
Foundation Options	Concrete Raft/Pad - Column - Grillage	-
Platforms (Default Option)	1	-
Design Standard	TIA-222H	-
CAPACITY & TOPOGRAPHY		
EPA * Range	5 - 40	m ²
Topographic Factor	TIA-222H	-

* EPA = Projected Antenna Area x Cf

** Can be adjusted to medium and high wind speeds

