

RDS-MB Range (Rapid Deployment Tower System)

A Mono Beam tower fixed on a rapid deployment grillage base. The tower uses castellated universal beam sections and has a narrow base. Ease of assembly and rapid installation are the main advantages of this tower. Options are available for adapting this tower to accommodate all design requirements such as category, topography, class etc.

This tower complies with international design standards (TIA222H) and can be re-certify to other standards if required.

Features

- All elements bolted for ease of assembly and installation
- Available in various antenna loading
- Fully hot-dip galvanized
- S355 Steel
- Standard bolts sizes (Grade 8.8)
- TIA-222-H standard
- Optimized for weight for per-case EPA*
- Fencing & security options Available
- Support for leg & face mount antennas
- Options available for design adaptation to special wind & Ice conditions

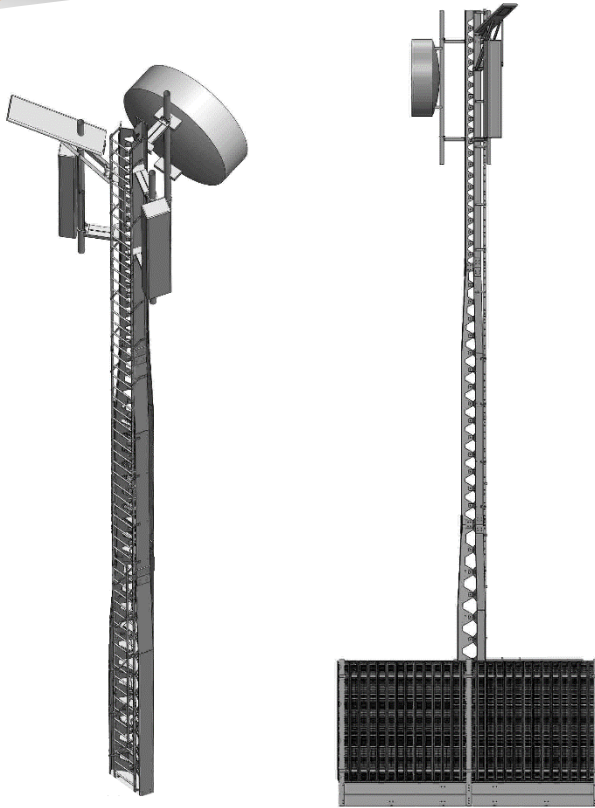
Applications

- Cellular & PCS systems
- Surveillance & monitoring support
- Concerts & entertainment broadcasting & lighting
- Temporary sites

PRODUCT SPECIFICATION

PRODUCT NAME : RDS-MB

CATEGORY : RDS Tower



Includes

- Ladder
- Lighting spike
- Fall arrest
- Built-in cable tray
- Grounding + Foundation
- Assembly drawings

Additional Options

- Fencing & security
- Anti-climbing solutions
- Mounting kits
- Antenna bracket kits
- Cladding
- Equipment mounts

GENERIC SPECIFICATIONS		
Tower Height Range	10 - 25	m
Tower Type	Stepped Mono Beam	-
Class of Structure	II	-
Basic Wind Speed (TIA)	40 **	m/s
Designed For Period of	50	years
Joint Type	Bolted	-
Platforms (Default Option)	NA	-
Design Standard	TIA-222H	-
CAPACITY & TOPOGRAPHY		
EPA* Range	3 - 10	m ²
Topographic Factor	TIA-222H	-

* EPA = Projected Antenna Area x Cf

** Can be adjusted to medium and high wind speeds

